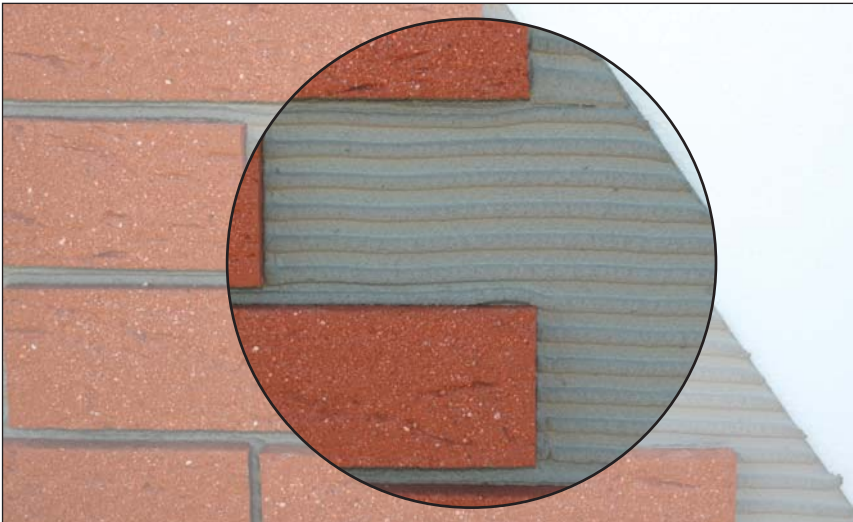


Adhesive mortar for mineral fibre
lamella insulation or brick slips

weber.rend EXB



Uses

- As an adhesive to bond mineral fibre – lamella insulation to plywood substrates
- To bond brick slips as part of **weber.therm XB** External Wall Insulation System

About this product

weber.rend EXB is a high polymer-modified, dry powder, cement based adhesive mortar.

Features and benefits

- ▲ Polymer modified for high bond strength
- ▲ Quality controlled and factory blended to give a consistently high quality product
- ▲ Practical benefits of smooth application, speed, economy and long shelf life

Technical data

External wall insulation systems – weber.therm XB and weber.therm XM

Insulation Board	Reinforcement	Fixing	1st Coat	2nd Coat	Finish
weber.therm XB					
EPS	N/A	Mechanical	weber.rend EXB	N/A	Brick slip and weber.rend BPM
PHS	N/A				
PIR	N/A				
MFD	Meshcloth	Mechanical	weber.rend LAC	weber.rend EXB	
MFL	N/A	weber.rend LAC	weber.rend EXB	N/A	
weber.therm XM					
MFL	Meshcloth	weber.rend EXB	weber.rend LAC	weber.rend PTC, weber.rend PTS	Dry-dash, scraped texture or primer and synthetic finish

weber.rend EXB

Preparation

All surfaces must be sound, clean, dry and free from any material which may impair adhesion.

Where **weber.rend EXB** is used as an adhesive on to a plywood substrate, the sheathing must be of adequate thickness, securely fixed, in-plane, without deflection or edge protrusions.

Scaffolding must be independently tied to allow uninterrupted application. Any faults in the structure, particularly those which may lead to moisture penetration, must be rectified.

Mixing and application

Mix **weber.rend EXB** by adding clean water only. Mix in a rubber/plastic bucket using a paddle mixer to a thick creamy consistency.

Bonding insulation to plywood

Apply **weber.rend EXB** approximately 6 mm thick to the **weber.therm MFL** insulation. Fully comb prior to fitting the plywood substrate then insert **Weber** fixings at the rate of 2 per board or part board every fourth course.

Bonding brick slips

Apply a coat of **weber.rend EXB**, nominal thickness 4 mm (in two passes) to an area approximately 0.75 m² and comb horizontally using a 6 mm notched trowel. Press the brick slips into the freshly applied mortar.

Alternatively, apply a tight coat of **weber.rend EXB**, a small area at a time, and butter the back of the brick slips.

Use 8 or 10 mm spacers to create the required joint and support the brick slips while the mortar sets.

Good practice

Do not apply:

- If frost is forecast within 24 hours of use
- In damp/wet conditions
- In temperatures below 5°C or above 30°C
- On elevations in direct sunlight or where the substrate is hot

Packaging

weber.rend EXB is packaged in 3-ply 20 kg bags with batch code and description on the side.

Coverage

Use	Nominal thickness	Coverage
Bonding insulation	3 mm	6 kg/m ²
Brick slips	4 mm	8 kg/m ²

Note: This estimate takes no account of wastage.

Storage and shelf life

When stored unopened in a dry place at temperatures above 5°C, shelf life is 12 months from date of manufacture.

Health and safety

Contains cement (Contains chromium (VI)). May produce an allergic reaction. Harmful by inhalation. Irritating to eyes and skin. Keep out of the reach of children. In case of contact with eyes, rinse immediately with plenty of water and seek medical help. After contact with skin, wash immediately with plenty of soap and water. Wear suitable protective clothing, gloves and eye/face protection.

For further information, please request the Material Safety Data Sheet for this product.

Technical services

Weber's Customer Services Department has a team of experienced advisors available to provide on-site advice both at the specification stage and during application. Detailed specifications can be provided for specific projects or more general works. Site visits and on-site demonstrations can be arranged on request.

Technical helpline

Tel: 01525 722100
 Fax: 01525 718988
 e-mail solutions@netweber.co.uk

Sales enquiries

Weber products are distributed throughout the UK through selected stockists and distributors. Please contact the relevant Customer Services Team below for all product orders and enquiries.

England and Wales

Tel: 01525 722100
 Fax: 01525 718988
 e-mail sales@netweber.co.uk

Scotland, Northern Ireland, Isle of Man, Republic of Ireland

Tel: 028 9335 2999
 Fax: 028 9332 3232
 e-mail sales@netweber.co.uk

Saint-Gobain Weber Ltd

Dickens House, Enterprise Way, Maulden Road, Flitwick, Bedford MK45 5BY, UK
 Tel: 01525 722100 Fax: (01525) 718988 e-mail: mail@netweber.co.uk
 www.netweber.co.uk

To the best of our knowledge and belief, this information is true and accurate, but as conditions of use and any labour involved are beyond our control, the end user must satisfy himself by prior testing that the product is suitable for his specific application, and no responsibility can be accepted, or any warranty given by our Representatives, Agents or Distributors. Products are sold subject to our Standard Conditions of Sale and the end user should ensure that he has consulted our latest literature.