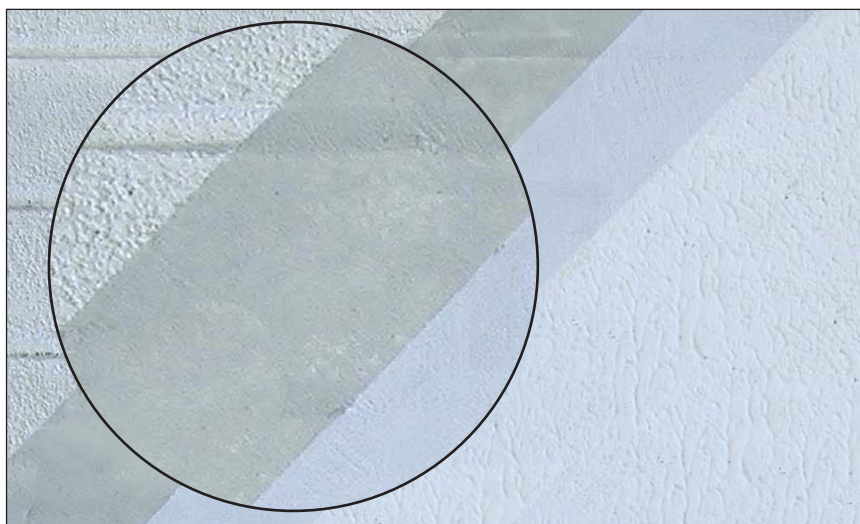


Ready-mixed levelling coat for
external or internal wall surfaces

renovex P



About this product

renovex P is a ready-mixed levelling treatment for facades prior to the application of decorative coatings such as the **santane** and **plastene** coating systems and finishes. It is an acrylic polymer dispersion containing selected aggregates and additives.

Technical data

pH	8
Colour	Off white
Dry density when set	1.85
Adhesion to sand/cement render	> 1 N/mm ²

This data represents laboratory tests on hardened **renovex P** and may vary according to the application conditions.

Uses

- External or internal walls
- Over non-flexible polymer-based coatings
- Existing paint in sound condition (except silicate and polyurethane paints)
- Concrete, sand/cement rendered masonry. Internal: gypsum plaster and fair-faced brick or blockwork
- Mosaics (glass or ceramic) and 5 cm x 5 cm (max.) unglazed ceramic tiles

For other substrates, please contact our Technical Advisory Service.

Constraints

Do not apply:
 On horizontal or sloping surfaces exposed to wet conditions
 Below DPC level
 Onto flexible coatings

Features and benefits

- ▲ Ready-mixed product
- ▲ Water-based
- ▲ Disguises joints and irregularities in substrates which would otherwise be visible in decorative coatings
- ▲ Certification; Cahier des Charges VERITAS (on mosaics and ceramic tiles) No. 5159 UTN 788100

renovex P

Preparation

Surfaces must be clean, sound, dry and well adhered to the background.

On roller applied polymer-based coatings, scrape and flatten the textured surface by suitable means in order to reduce the thickness of application of **renovex P**.

Clean the surface by using a high pressure water jet.

On porous/dusty surfaces, apply one coat of **weber SL410**.

Application

Prior to applying **renovex P**, prime with one coat of **weber PR335** using a wool roller or a brush. Depending on climatic conditions, allow at least 4 hours for the primer to dry out. **renovex P** is ready to use: do not add water.

Apply **renovex P** using a stainless steel trowel, and level out. The thickness of application may vary from 0.5 mm to 2.5 mm per coat up to a maximum of 5 mm thickness (in 2 coats).

Allow the **renovex P** to dry out (3 hours between coats) and then remove any imperfections from the hardened surface with the edge of a smoothing trowel.

Allow 2 to 3 days for **renovex P** to completely dry prior to applying any other coating.

Apply in temperatures (ambient and surface) between 5°C and 30°C.

Do not apply:

- During very humid weather conditions or if rain is forecast.
- During extreme hot weather or when exposed to strong winds.
- On damp or frozen/thawing surfaces.
- On hot or frozen/thawing surfaces.

Clean tools after use with water.

Packaging

renovex P is supplied in 25 kg plastic buckets.

Coverage

Approximately 1.5 to 2.0 kg per mm of thickness applied.

Note: These estimates take no account of wastage and will vary according to the type of surface involved.

Storage and shelf life

Store in dry conditions between 5°C and 30°C.

Shelf life of material in unopened plastic bucket kept under correct storage conditions is at least 12 months.

Protect from frost.

Do not over-stack.

Health and safety

Essentially not hazardous.

Not harmful during normal use.

After contact with skin, wash immediately with plenty of water.

In case of contact with eyes, rinse immediately with plenty of water and seek medical advice.

Keep out of the reach of children.

For further information, please request the Material Safety Data Sheet for this product.

Technical services

Weber's Customer Services Department has a team of experienced advisors available to provide on-site advice both at the specification stage and during application. Detailed specifications can be provided for specific projects or more general works. Site visits and on-site demonstrations can be arranged on request.

Technical helpline

Tel: (01525) 722110
Fax: (01525) 718988

Sales enquiries

Sales, England and Wales

Tel: (01782) 813028
Fax: (01782) 839028

Sales, Scotland

Tel: (0141) 445 0121
Fax: (0141) 445 0122

Sales, Ireland

Tel: (028) 9335 2999
Fax: (028) 9332 3232

Saint-Gobain Weber Ltd

Dickens House, Enterprise Way, Maulden Road, Flitwick, Bedford MK45 5BY, UK
Tel: 08703 330070 Fax: (01525) 718988 e-mail: mail@netweber.co.uk

To the best of our knowledge and belief, this information is true and accurate, but as conditions of use and any labour involved are beyond our control, the end user must satisfy himself by prior testing that the product is suitable for his specific application, and no responsibility can be accepted, or any warranty given by our Representatives, Agents or Distributors. Products are sold subject to our Standard Conditions of Sale and the end user should ensure that he has consulted our latest literature.