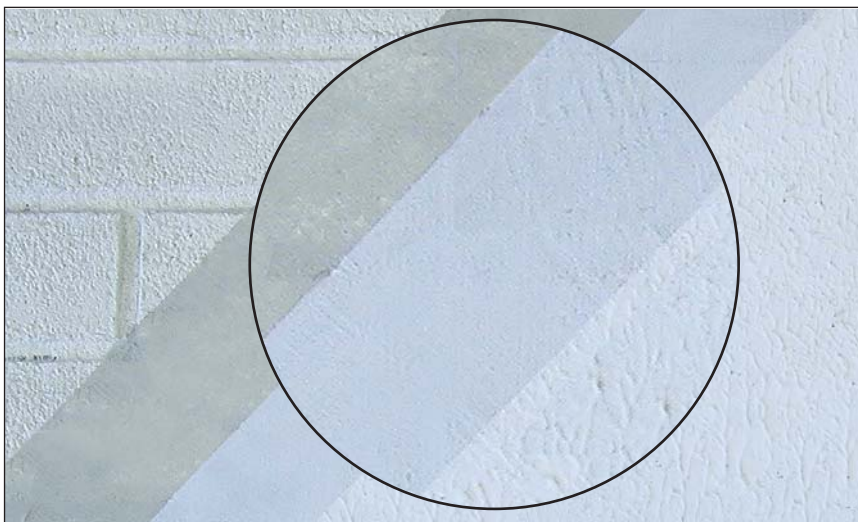


A low-viscosity primer
for use with **santane EFL**

weber PR335

santane primer



About this product

weber PR335 is a factory-produced product containing finely-dispersed mineral aggregates, resin binders and pigments.

Technical data

weber PR335 is an effective method of preparing low-porosity and non-porous substrates prior to the application of **santane EFL**.

Uses

- For preparing substrates prior to the application of **santane EFL**
- Used to equalise or reduce excessive suction
- To provide a bond to glossy surfaces such as tiles and mosaics

Constraints

Do not apply:
 On horizontal or sloping surfaces exposed to wet/damp conditions
 Below DPC level
 On hot or frozen/thawing surfaces

The quality of application of this material depends on suitable operative skills and product familiarity.

Restrictions on weather conditions during application and curing must be respected.

Sound trade practices and printed instructions must be followed.

Good access and appropriate protection must be provided.

Features and benefits

- ▲ Low-viscosity
- ▲ Practical benefits of ease of application, speed, economy and long shelf-life
- ▲ Established track record in varying climatic conditions

EU VOC regulations 2008

EU limit for weber PR335 (cat A/c or g):
 c-75 g/l, g-50 g/l (2007)/c-40 g/l, g-30 g/l (2010). **weber PR335** contains <40 g/l VOC.

weber PR335

Preparation

Substrates must be clean, sound, dry and free of dust or other contamination.

Application

Stir well in buckets prior to applying to the work area, as contents may have settled during transit.

weber PR335 is ready to use – do not add water.

Apply to the wall surface using brush or a wool roller, ensuring complete coverage of all areas before over coating.

Primer should be applied at least 4 hours prior to application of **santane EFL**. The drying period will vary according to weather conditions and quality of substrate.

Apply in temperatures (ambient and surface) between 5°C and 30°C.

Spillages stain and are difficult to remove so:

- protect vulnerable areas
- wear protective clothing

Do not apply:

- During very humid weather conditions or if rain is forecast
- During extreme hot weather or when exposed to strong winds
- On damp or frozen / thawing surfaces

Clean tools after use with water.

Packaging

weber PR335 is packaged in 20 kg plastic containers with batch code and description on the side.

Coverage

Use	Nominal thickness	Coverage
Primer	N/A	180 – 250 g/m ²

Note: This estimate takes no account of wastage and will vary according to the type of substrate. Allowance must be made for extra material required on high suction substrates.

Storage and shelf life

When stored airtight in a dry place at temperatures above 5°C and protected from frost, shelf life is 12 months from date of manufacture.

Health and safety

Essentially not hazardous.
 Not harmful during normal use.
 After contact with skin, wash immediately with plenty of water.
 In case of contact with eyes, rinse immediately with plenty of water and seek medical advice.
 Keep out of the reach of children.

For further information, please request the Material Safety Data Sheet for this product.

Technical services

Weber's Customer Services Department has a team of experienced advisors available to provide on-site advice both at the specification stage and during application. Detailed specifications can be provided for specific projects or more general works. Site visits and on-site demonstrations can be arranged on request.

Technical helpline

Tel: (01525) 722110
Fax: (01525) 718988

Sales enquiries

Sales, England and Wales
Tel: (01525) 722100
Fax: (01525) 718988

Sales, Scotland

Tel: (0141) 445 0121
Fax: (0141) 445 0122

Sales, Ireland

Tel: (028) 9335 2999
Fax: (028) 9332 3232

Saint-Gobain Weber Ltd

Dickens House, Enterprise Way, Maulden Road, Flitwick, Bedford MK45 5BY, UK
Tel: 08703 330070 Fax: (01525) 718988 e-mail: mail@netweber.co.uk

To the best of our knowledge and belief, this information is true and accurate, but as conditions of use and any labour involved are beyond our control, the end user must satisfy himself by prior testing that the product is suitable for his specific application, and no responsibility can be accepted, or any warranty given by our Representatives, Agents or Distributors. Products are sold subject to our Standard Conditions of Sale and the end user should ensure that he has consulted our latest literature.