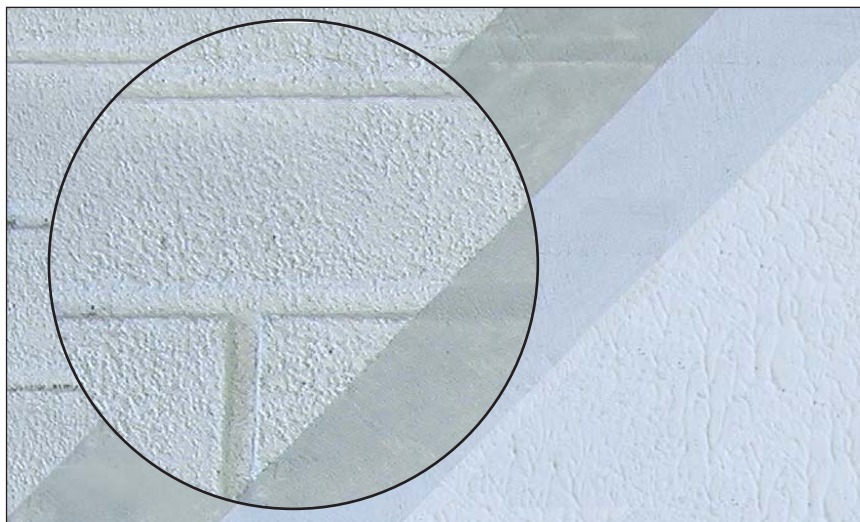


Surface sealer for porous/friable surfaces

weber SL410

santane/plastene sealer



Uses

- As a sealer for porous or friable surfaces prior to the application of **santane** or **plastene** finishes

Constraints

Do not use:

- On horizontal or sloping surfaces exposed to wet conditions
- Below DPC
- On hot or frozen/thawing surfaces
- On a substrate that is friable throughout its full thickness

Do not apply during adverse weather conditions or on surfaces exposed to drying winds.

About this product

weber SL410 is a sealer to stabilise substrates that may have a friable and porous surface prior to the application of synthetic decorative finishes.

Features and benefits

- ▲ Highly penetrating formulation
- ▲ Binds surfaces that would otherwise be unsuitable to receive coatings

Technical data

Composition	White spirit dispersed polyurethane resin
Colour	Clear
Density	0.8

EU VOC regulations 2008

EU limit for weber SL410 (cat A/h): 750 g/l (2007)/750 g/l (2010).
weber SL410 contains <675 g/l VOC.

weber SL410

Preparation

Substrates must be clean, basically sound, dry and free from dust or other contamination.

Application

weber SL410 is supplied ready for use – do not add water, but stir thoroughly before use.

Apply one coat of **weber SL410** using a wool roller or brush.

Allow at least 24 hours to dry before applying the decorative coating.

Storage and shelf life

Store in dry conditions between 5°C and 30°C. Shelf life of unopened can in correct storage conditions is at least 12 months. Protect from frost.

Packaging

weber SL410 is supplied in 15 litre metal cans.

Coverage

Coverage is approximately 150 to 350 ml/m².

Health and safety

Contains low boiling point treated naphtha (white spirit).

Flammable.

Harmful: may cause lung damage if swallowed.

Do not breathe vapour. Avoid contact with skin and eyes. Wear suitable protective clothing, gloves and eye / face protection.

If swallowed, do not induce vomiting: seek medical advice immediately and show container or label.

For further information, please request the Material Safety Data Sheet for this product.

Technical services

Weber's Customer Services Department has a team of experienced advisors available to provide on-site advice both at the specification stage and during application. Detailed specifications can be provided for specific projects or more general works. Site visits and on-site demonstrations can be arranged on request.

Technical helpline

Tel: (01525) 722110
Fax: (01525) 718988

Sales enquiries

Sales, England and Wales

Tel: (01782) 813028
Fax: (01782) 839028

Sales, Scotland

Tel: (0141) 445 0121
Fax: (0141) 445 0122

Sales, Ireland

Tel: (028) 9335 2999
Fax: (028) 9332 3232

Saint-Gobain Weber Ltd

Dickens House, Enterprise Way, Maulden Road, Flitwick, Bedford MK45 5BY, UK
Tel: 08703 330070 Fax: (01525) 718988 e-mail: mail@netweber.co.uk

To the best of our knowledge and belief, this information is true and accurate, but as conditions of use and any labour involved are beyond our control, the end user must satisfy himself by prior testing that the product is suitable for his specific application, and no responsibility can be accepted, or any warranty given by our Representatives, Agents or Distributors. Products are sold subject to our Standard Conditions of Sale and the end user should ensure that he has consulted our latest literature.