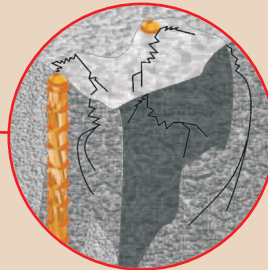
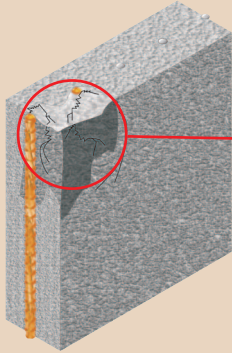


Refurbishing decaying concrete facades

Concrete structures often show signs of degradation over a period of time and these detract from the appearance and can eventually affect the structure.

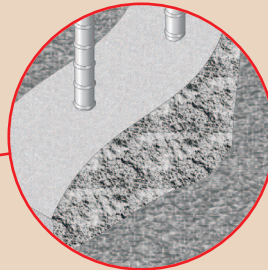
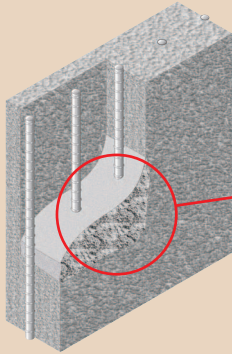
1 Corroded rebar affects concrete cover



Over a period of time, carbonation will affect concrete cover to reinforcing steel and lead to its corrosion. Unattended this will in time make the structure unsafe and eventually uninhabitable.

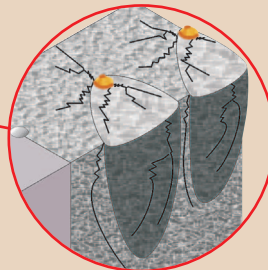
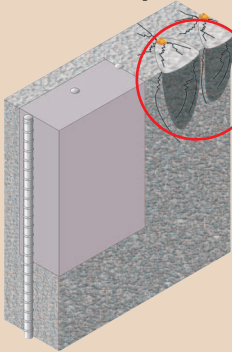
This effect is especially associated with construction where there is insufficient concrete cover to reinforcing steel.

2 Inadequate patch repairs



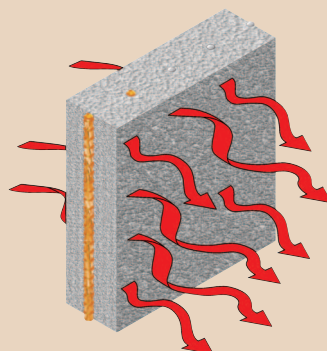
Simple cutting out and repair of decayed areas can leave uneven surfaces and even after fairing coats are used buildings retain their original, often dated, appearance.

3 Failure to prevent further corrosion



Even when repaired, the process of deterioration will continue in other areas if no action is taken to protect the structure from the elements.

4 Low thermal insulation



Old structures that have degraded over time often have low levels of thermal insulation when compared to modern standards and are more likely to suffer from related condensation and damp problems.



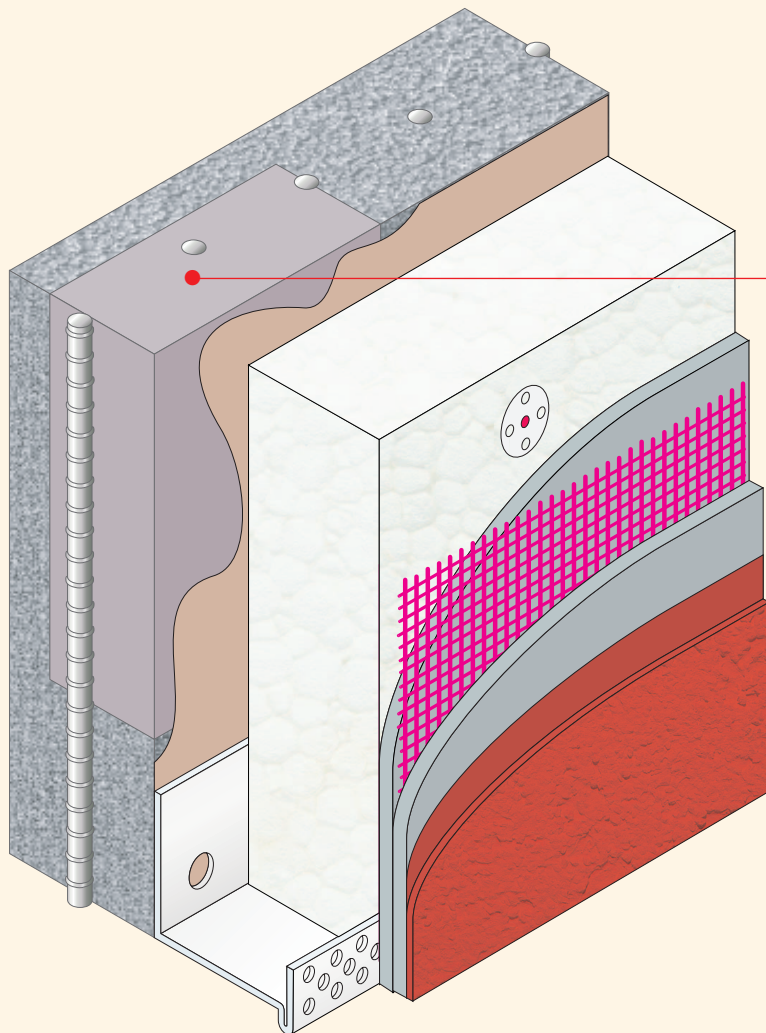
Repair damage and insulate with EWI system

Repair damage to concrete elements to stabilise the structure and then enhance the finish and

prevent further degradation with an External Wall Insulation System.

Products required

weber.mulsifix concrete repair system
weber.therm external wall insulation system



Assessment

Assess and cut out areas of damaged reinforced concrete. Assess structural strength and stability.

Repair

Clean steel and repair with a suitable concrete repair system from **weber**.

Each situation will need to be addressed on an individual basis.

In the first instance contact **weber** technical staff for advice on 01525 722110.

Insulate

Protect/upgrade, insulate and, if desired, remodel the structure with an External Wall Insulation System from the **weber** range.

See page 74 for selection advice.