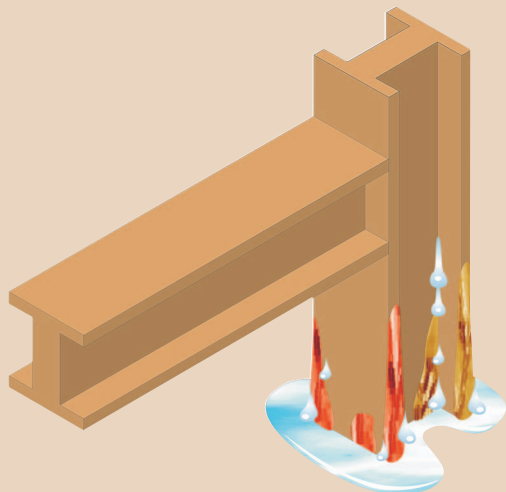


Insulating structural frames

A proven fast-track method of concrete or steel frame construction. Infill walls need to

be provided and the structural frame kept warm and dry.

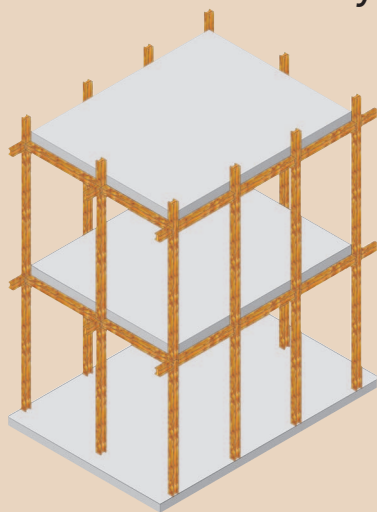
1 Corrosion



The frame is structural and load bearing and steel, although of relatively thick section, vulnerable to corrosion if subjected for long periods to damp conditions.

Although the steelwork is not exposed in reinforced concrete frames, structures need to be protected to ensure long life.

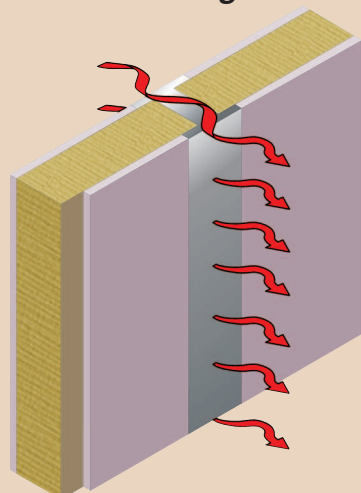
2 Structural framework only provides a skeleton



The structural frame is merely a skeleton and needs a facade.

Lightweight metal framing or single skin masonry can be used to provide walls, however the insulation issue needs to be addressed to comply with building regulations.

3 Heat loss through the frame structure



The frame structure itself could provide a cold bridge to the exterior.

Insulation must be placed at the correct position in the structure to avoid interstitial condensation, cold bridging and the conditions under which corrosion could take place.



Construct in-fill panels and insulate with EWI system

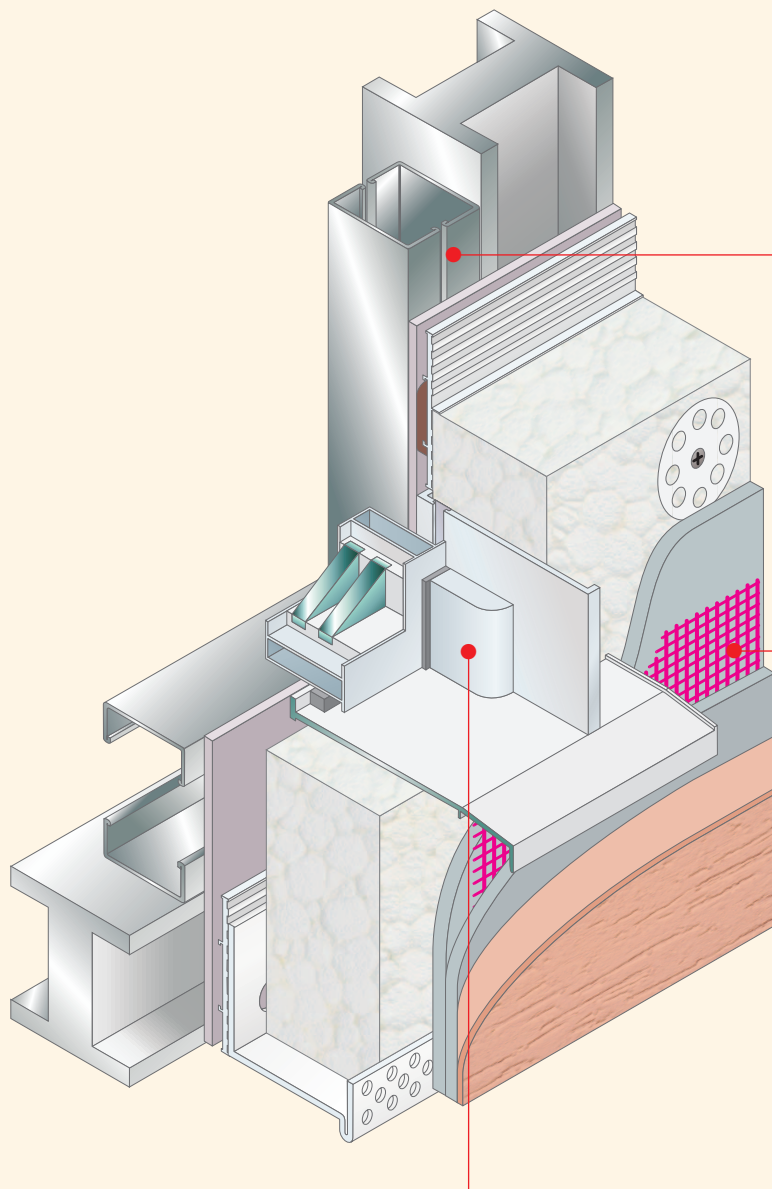
Construct in-fill panels with lightweight steel frame or single skin masonry and insulate the

total structure with a **weber** Insulated Render System. Use the **weber.therm FT** components to

provide extra levels of protection with a water defence cavity and robust detailing.

Products required

weber.therm XM
weber.therm FT



Preparation

Construct in-fill walls with either lightweight steel frame and cover with a suitable sheathing board or single skin masonry.

Insulate

weber.therm XM provides the insulation capability to completely envelop both the structural frame and lightweight infill panels, keeping them in ideal warm and dry conditions, free from the dangers of interstitial condensation. Several external finish options are available.

Waterproof detailing

For further levels of protection, **weber.therm FT** components could be used in conjunction with **weber.therm XM** to provide a water defence cavity and the highest level of robust detailing.

