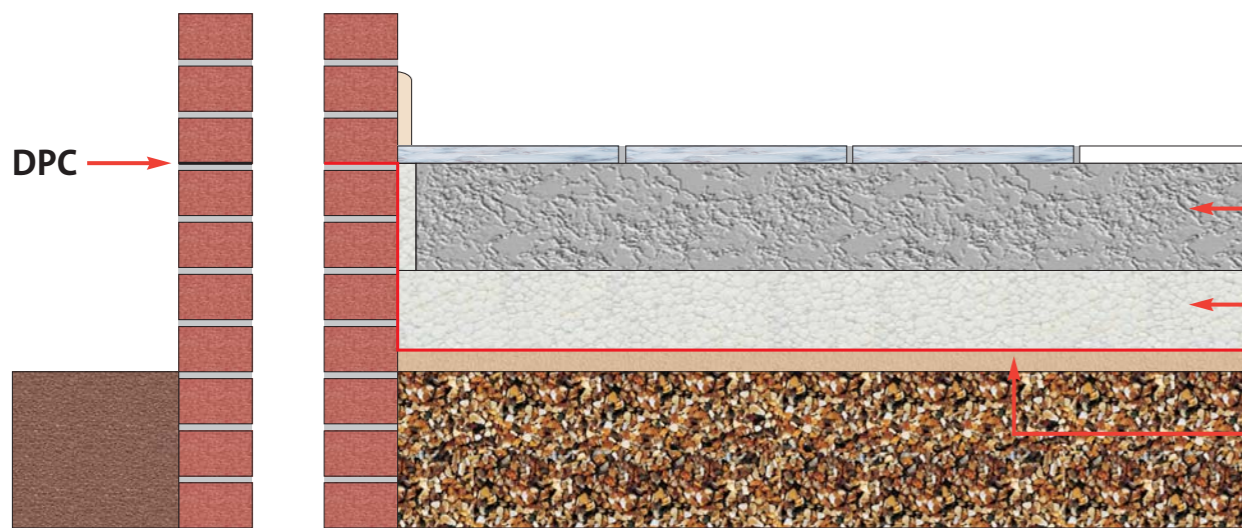




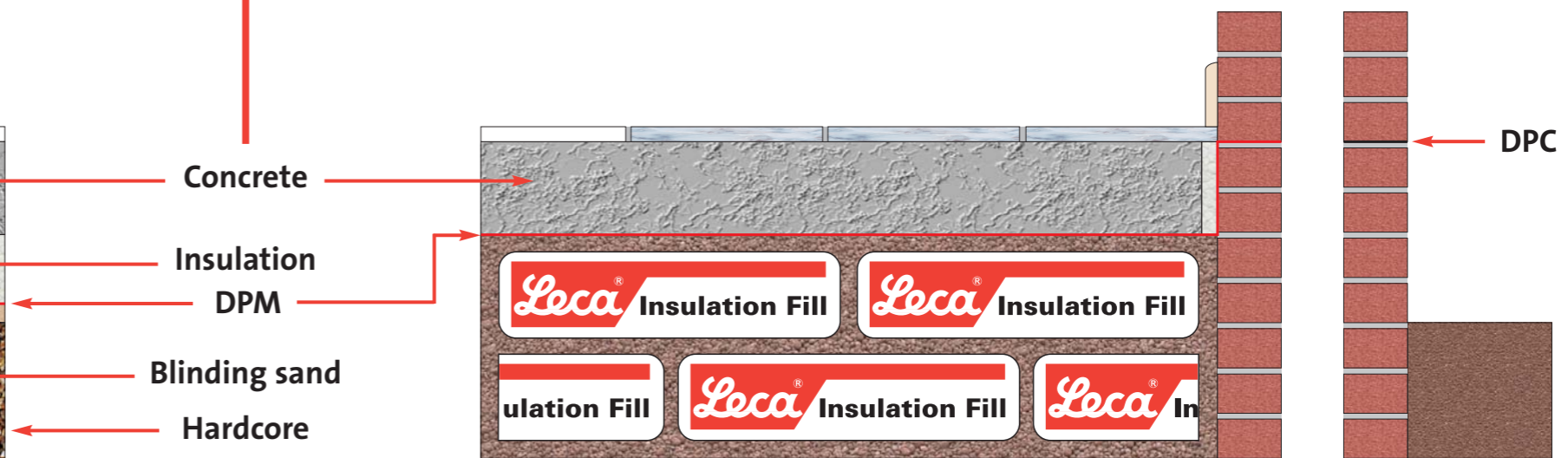
Insulation Fill

Save time and money insulating floors!

Traditional Solution



Leca Insulation Fill Solution



Material

- 4000 kg 150 mm MOT Type 1 hardcore
- 500 kg 25 mm sand blinding
- 4 boards 100 mm rigid insulation
- 12 m² of damp-proof membrane
- Tape

Equipment

- Whacker plate

Time

- Two men/one day

Total cost for traditional solution, approx £750

Above calculations based on 12 m² conservatory base on property with side access excluding cost of slab.

Material

- 72 bags of Leca
- 12 m² of damp-proof membrane
- Tape

Equipment

- None

Time

- Two men/2 – 3 hours

Total cost for Leca Insulation Fill solution, approx £470

Above calculations based on 12 m² conservatory base on property with side access excluding cost of slab.



Saint-Gobain Weber Ltd
Dickens House, Enterprise Way, Maulden Road, Flitwick, Bedford MK45 5BY, UK
Tel: 08703 330070 Fax: (01525) 718988 e-mail: mail@netweber.co.uk

Your local Stockist is



Step 1 Use loose material to level up the sub floor and then lay the bags on top.



Step 2 Continue to lay bags side by side to cover the floor area. If a second layer is needed, lay in a brick bond pattern.



Step 3 Once at the required depth, use loose material to fill the holes between bags and level off.



Step 4 Lay a 1200 gauge damp proof membrane over the insulation fill. The insulated floor is ready to receive the concrete slab.